

Intro to "Phrasing" when Guitar Soloing

Steve Stine

Intro Jam

♩ = 90
Am⁷

T
A
B

Dm⁷ Am⁷ Fmaj⁷

T
A
B

E⁷ Am⁷

T
A
B

p

T
A
B

p

Am Pentatonic Scale

The first system shows the Am Pentatonic Scale. The top staff is a treble clef staff with a key signature of one flat (Bb) and a 4/4 time signature. The scale is written in a single line, starting on the G4 string (5th fret) and ending on the G4 string (5th fret). The notes are G4, A4, Bb4, C5, D5, and E5. The bottom staff is a guitar TAB staff with two lines (T and B). The notes are indicated by fret numbers: 5, 8, 5, 7, 5, 7, 5, 7, 5, 8, 5, 7, 5, 7, 5, 8, 5.

Example using 8th notes

The second system shows an example using 8th notes. The top staff is a treble clef staff with a key signature of one flat (Bb) and a 4/4 time signature. The scale is written in a single line, starting on the G4 string (5th fret) and ending on the G4 string (5th fret). The notes are G4, A4, Bb4, C5, D5, and E5. The bottom staff is a guitar TAB staff with two lines (T and B). The notes are indicated by fret numbers: 5, 7, 5, 5, 7, 5, 7, 5, 5, 7, 7, 8, 5, 8/10, 5, 5, 8.

The third system shows an example using 8th notes. The top staff is a treble clef staff with a key signature of one flat (Bb) and a 4/4 time signature. The scale is written in a single line, starting on the G4 string (5th fret) and ending on the G4 string (5th fret). The notes are G4, A4, Bb4, C5, D5, and E5. The bottom staff is a guitar TAB staff with two lines (T and B). The notes are indicated by fret numbers: 8, 5, 7, 5, 5, 7, 5, 7, 5, 7, 5.

The fourth system shows an example using 8th notes. The top staff is a treble clef staff with a key signature of one flat (Bb) and a 4/4 time signature. The scale is written in a single line, starting on the G4 string (5th fret) and ending on the G4 string (5th fret). The notes are G4, A4, Bb4, C5, D5, and E5. The bottom staff is a guitar TAB staff with two lines (T and B). The notes are indicated by fret numbers: 5, 7, 5, 7, 7, 5, 7, 5, 7.

Example using 8th notes

The first system consists of a treble clef staff and a guitar tablature. The staff contains a melodic line of eighth notes: G4, A4, B4, C5, B4, A4, G4, F4, E4, D4, C4. The tablature below is organized into four measures. Measure 1: T (5), A (7), B (5) with a slash. Measure 2: T (7), A (5), B (7) with a slur over 7-5-7, and T (5), A (7), B (5) with a slur over 7-5-7. Measure 3: T (7), A (5), B (7) with a slur over 7-5-7, and T (7), A (5), B (7) with a slur over 7-5-7. Measure 4: T (7), A (5), B (7) with a slur over 7-5-7, and T (5), A (10), B (10) with a slur over 5-10-10. A wavy line is above the final note in the staff and above the final measure of the tablature.

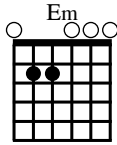
The second system consists of a treble clef staff and a guitar tablature. The staff contains a melodic line of eighth notes: G4, A4, B4, C5, B4, A4, G4, F4, E4, D4, C4. The tablature below is organized into four measures. Measure 1: T (10) with an arrow labeled 'full' pointing to it, and T (10) with a dot above it. Measure 2: T (13), A (10), B (13) with a slur over 10-13, and T (5), A (5) with a slur over 5-5. Measure 3: T (8) with a wavy line above it, and T (7) with a slash. Measure 4: T (5), A (7), B (7) with a slur over 5-7-7, and T (5), A (7), B (7) with a slur over 5-7-7, and T (7), A (7), B (5) with a slur over 7-7-5. A wavy line is above the final note in the staff and above the final measure of the tablature.

The third system consists of a treble clef staff and a guitar tablature. The staff contains a melodic line of eighth notes: G4, A4, B4, C5, B4, A4, G4, F4, E4, D4, C4. The tablature below is organized into four measures. Measure 1: T (5) with a wavy line above it, and T (7), A (5), B (7) with a slur over 7-5-7, and T (7), A (5), B (7) with a slur over 7-5-7. Measure 2: T (7), A (7), B (5) with a slur over 7-7-5, and T (7), A (5), B (8) with a slur over 7-5-8. Measure 3: T (7), A (5), B (7) with a slur over 7-5-7, and T (5), A (5), B (7) with a slur over 5-5-7. Measure 4: T (7), A (7), B (5) with a slur over 7-7-5, and T (7), A (7), B (5) with a slur over 7-7-5. A wavy line is above the final note in the staff and above the final measure of the tablature.

Guitar Notation Key

STANDARD NOTATION is written on a five-line staff.

TABLATURE represents the six strings of the guitar. The first string (thinnest) is on the top.



CHORD DIAGRAM
It illustrates how to form a chord. The 6th string (thickest) is on the left.

RIGHT HAND FINGERINGS
t (thumb) m (middle) i (index) r (ring)

ACCENT
Play this note louder

STACCATO
Play this note short

UPSTROKE
DOWNSTROKE

Standard notation on a five-line staff and tablature on a six-line staff. The tablature shows fret numbers for strings T (top), A, B (bottom). Fingerings t, m, i, r, m are indicated above notes.

Hammer-On

Pick the first note then sound the second by fretting it without picking.

Pull-Off

Pick the first note then sound the second by pulling the finger off without picking.

Vibrato

Bend and release the note continuously and smoothly.

Wide Vibrato

Bend and release the note continuously and widely to alter the pitch.

Whole Step Bend

Pick the note then bend the string up one step.

Half Step Bend

Pick the note then bend the string up a half step.

Grace Note Bend

Bend the string up immediately.

Blues Bend

Pick the note then bend the string up slightly.

Bend and Release

Pick only the first note then bend the string up one step. Finally release the bend.

Brackets indicate that this note should not be picked.

Pre-Bend

Before picking the note, bend the string up.

Pre-Bend and Release

First bend the string up then pick the note and finally release the bend back.

Unison Bend

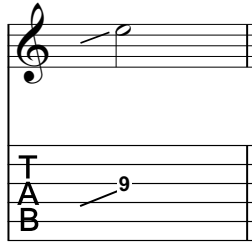
Pick both notes at the same time, immediately bend up the lower to the pitch of the higher.

Legato Slide



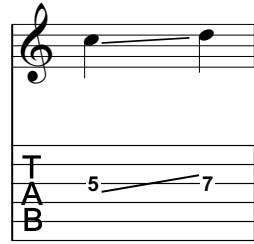
Pick the first note, then slide to the next without picking the last note.

Airplane Slide



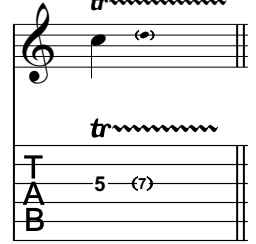
Quickly slide into the note.

Shift Slide



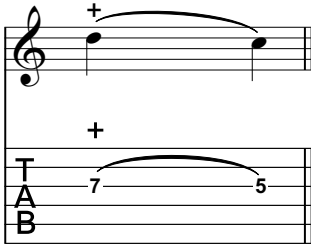
Pick the first note, then slide to the next, then pick the last note as well.

Trill



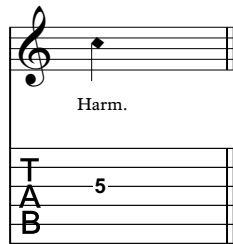
Quickly alternate between the two notes by continuously hammering on and pulling off.

Tapping



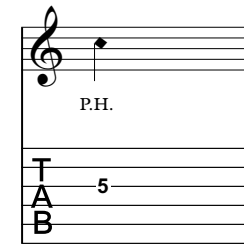
Fret the first note by tapping it with a finger of your picking hand, then pull off to the second note.

Natural Harmonic



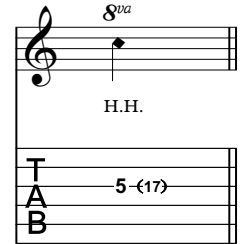
Gently touch the string above the fretwire without pressing it. Pick it. Finally bring your finger back immediately.

Pinch Harmonic



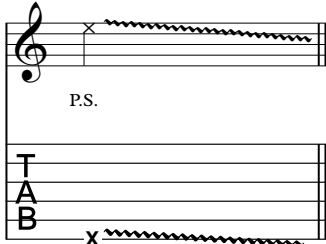
Pick the note normally, immediately touch the string with the thumb of your picking hand.

Harp Harmonic



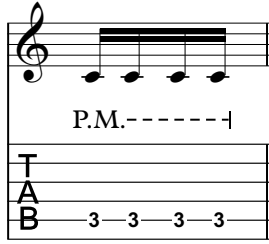
Gently touch the string above the indicated fretwire (in brackets) with your picking hand's index finger while the pick strikes the fretted note.

Pick Scrape



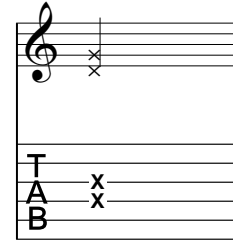
Scrape the edge of the pick along the wound strings.

Palm Muting



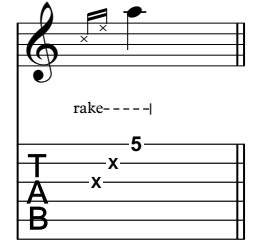
Gently rest the palm of your picking hand near the bridge to partially mute the notes.

Muffled Strings



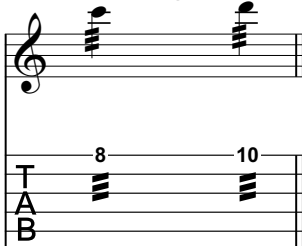
Gently rest your fret hand across the strings to obtain a percussive sound by striking them with your picking hand.

Rake



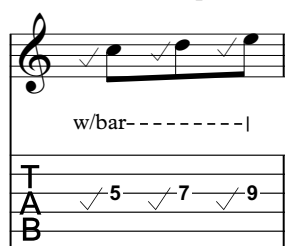
Quickly drag the pick across the strings. Mute the first two strings.

Tremolo Picking



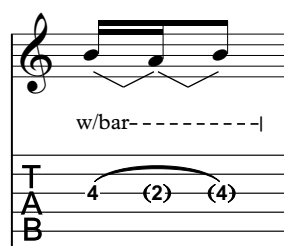
Continuously pick the notes as rapidly as possible.

Vibrato Bar Scoop



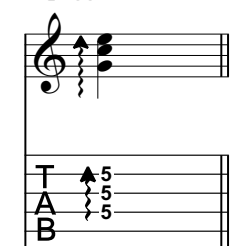
Pull the bar down just before picking the note, immediately release the bar.

Vibrato Bar Bend



Pick the first note, then pull the whammy bar down to the indicated pitch (in brackets), finally release the bar back.

Arpeggiate



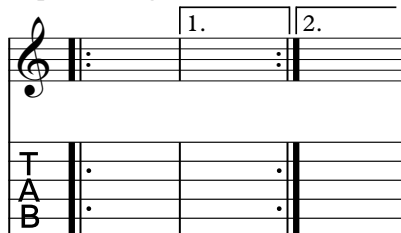
Roll the pick across the notes as indicated by the arrow.

Repetition Signs



Repeat bars between signs

Repetition Signs



Repeat bars between signs. First time play the first ending, second time continue through the second ending.

D.C. al Fine

Go back to the beginning of the song, then play until the mark "Fine", that means "end".

D.S. al Coda

Go back to the sign (§), then play until the bar marked (To Coda ϕ), then skip to the section marked (ϕ Coda)